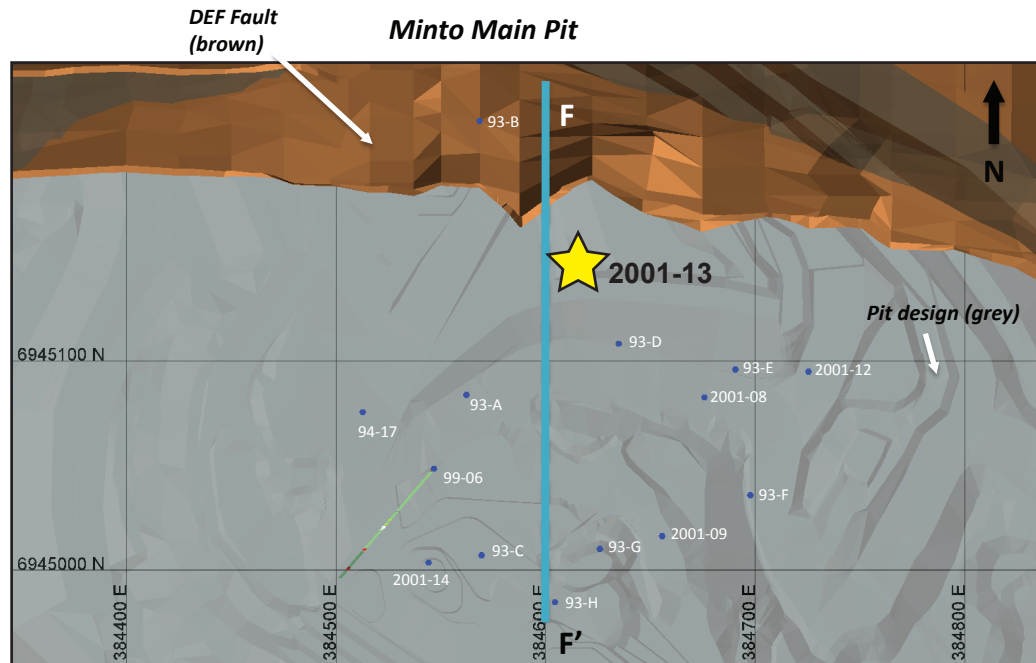


## Minto deposit (Yukon MINFILE 115I 021, 022)

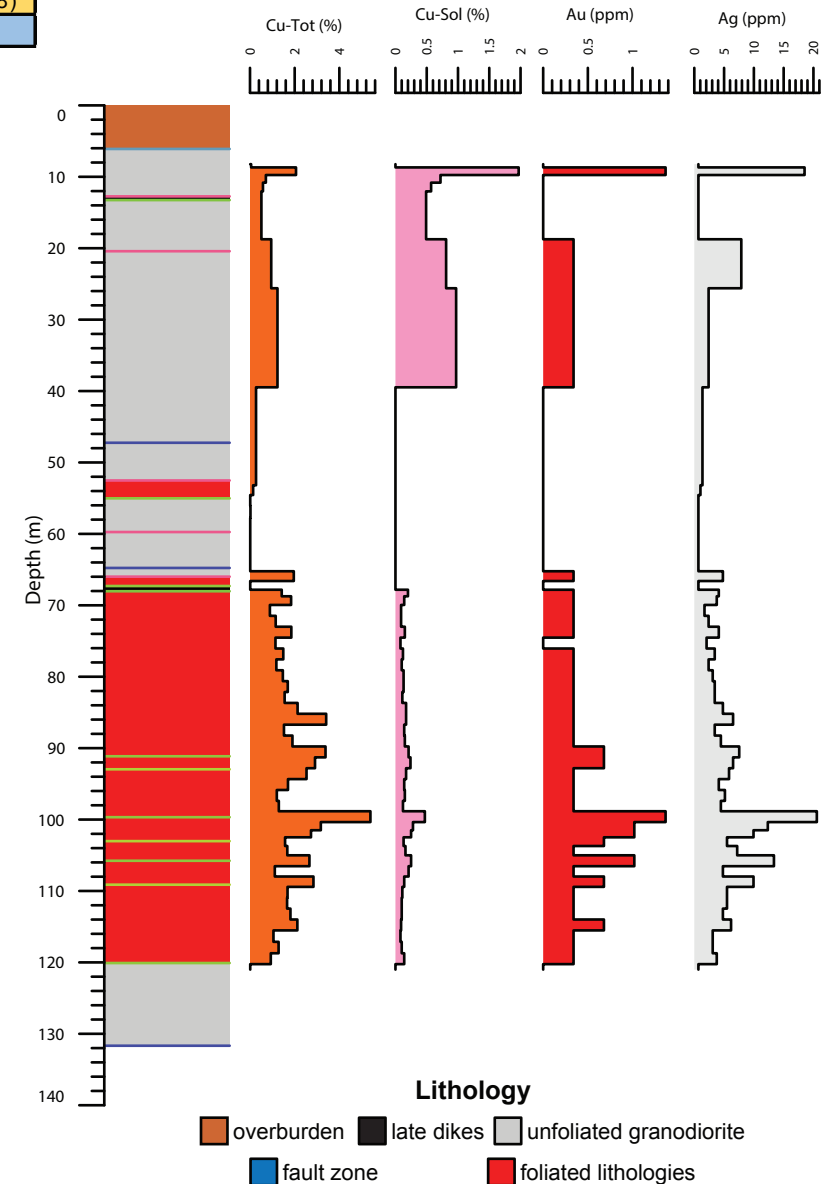
### Drill Hole: 2001-13, Minto Main deposit

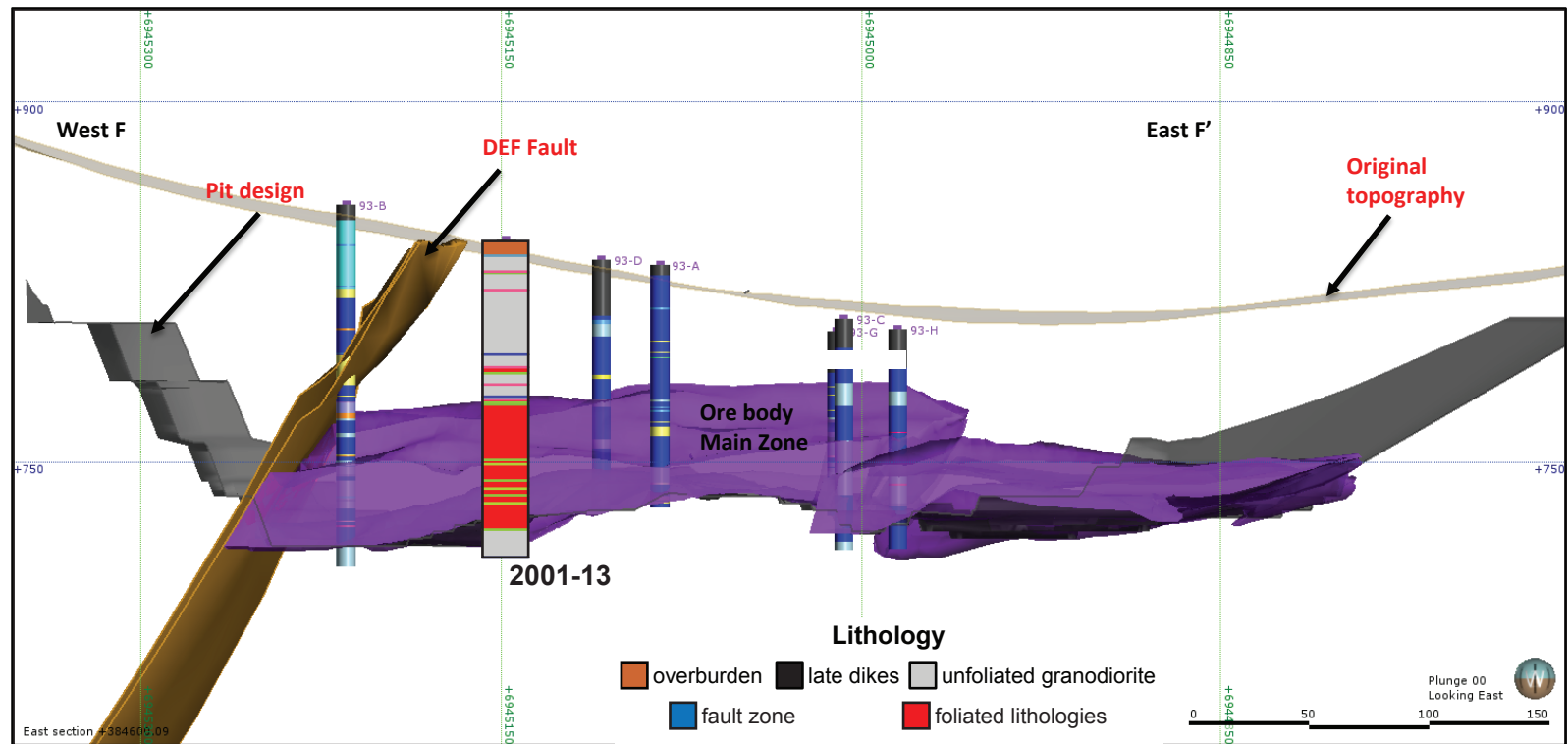
Area	Hole No.	Azimuth	Dip	Length (m)	Collar coordinates (NAD83, Zn 8)
Minto Main	2001-13	0	-90	131.67	384616mE, 6945147mN



Above: Orthophoto of Minto area. Collar location of 2001-13 shown by yellow star, blue circles show collar locations of other drill holes in YGS collection.

Right: Simplified strip log with selected assays.





Above: Simplified vertical north-south cross-section through the Minto Main pit.

Right: Selected assays through Minto Main zone. Cu - Tot = sulphide and non-sulphide copper, Cu-Sol = non-sulphide copper

Hole	From (m)	To (m)	Interval (m)	Sample	Cu (%)	Cu-Sol (%)	Au (ppm)	Ag (ppm)
2001-13	64.62	65.84	1.22	27285	0.0	0.0	0.0	0.7
2001-13	65.84	67.36	1.52	27286	2.0	0.0	0.3	4.8
2001-13	67.36	68.28	0.92	27287	0.0	0.0	0.0	0.7
2001-13	68.28	69.19	0.91	27288	1.4	0.2	0.3	4.1
2001-13	69.19	70.71	1.52	27289	1.8	0.1	0.3	3.8
2001-13	70.71	72.24	1.53	27290	0.9	0.1	0.3	1.7
2001-13	72.24	73.76	1.52	27291	1.2	0.1	0.3	2.4
2001-13	73.76	75.29	1.53	27292	1.9	0.2	0.3	4.1
2001-13	75.29	76.81	1.52	27294	1.1	0.1	0.0	2.1
2001-13	76.81	78.33	1.52	27295	1.5	0.1	0.3	3.4
2001-13	78.33	79.86	1.53	27296	1.2	0.1	0.3	2.4
2001-13	79.86	81.38	1.52	27297	1.5	0.1	0.3	3.1
2001-13	81.38	82.91	1.53	27298	1.7	0.1	0.3	3.4